



Shades SD 22, SD 40, SD 50, SD 100, SD 150

Material: hot-pressed, glass fibre reinforced polyester
 Colour: similar to RAL 7032 light grey,
 UV-resistant
 Low flammability and self-extinguishing

Options:

- ☐ GO antistatic to avoid electrostatic charges according to EN IEC 60079-0

1 Application

Simple shielding of enclosures, instruments and fittings providing protection against:

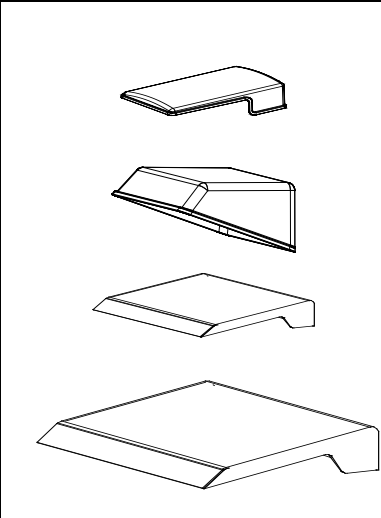
- Sun light (overheating)
- Dirt accumulation
- Exposure to atmospheric conditions
- Mechanical damage



2 Features

- Easy access to the transmitter, also allowing good lateral access.
- Various mounting possibilities, especially for the protection of transmitters, are available, as for example direct mounting of the SD22 at the transmitter head or mounting to the pipe stand or steel construction (see Datasheet: sample application and Mounting material [KD287](#))
- Heat-insulating material preventing the heat generated by solar radiation to be transferred.
- SD 22: structured surface improves UV-resistance.
- Stackable for space-saving transport and storage due to tapered side walls.

3 Types , Dimensions, Fastening

	Type	W x D x H (mm)	Fastening
	SD 22	210 x 365 x 111	1x RS 21* or MB-SD
	SD 40	410 x 320x 170	1x RS 21* or MB-SD
	SD 50	570 x 570 x 175	2x RS 50*
	SD 100	630 x 570 x 175	2x RS 100*
	SD 150	690 x 570 x 175	2x RS 150*
	SD 150Q	990 x 570 x 175	2x RS 150 Q*

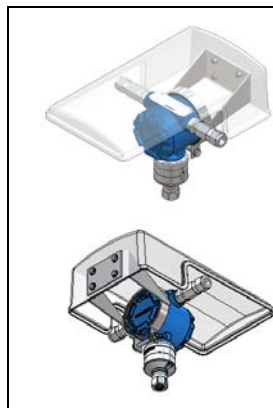
*in case of wall mounting 4 bolts M10 are required (not supplied with the shade)



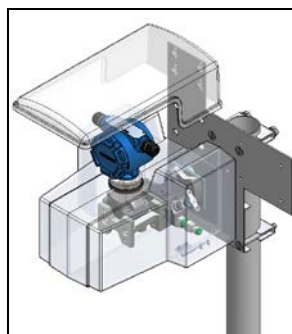
Shades SD 22, SD 40, SD 50, SD 100, SD 150

Applications

1 Transmitter below Shade SD 22



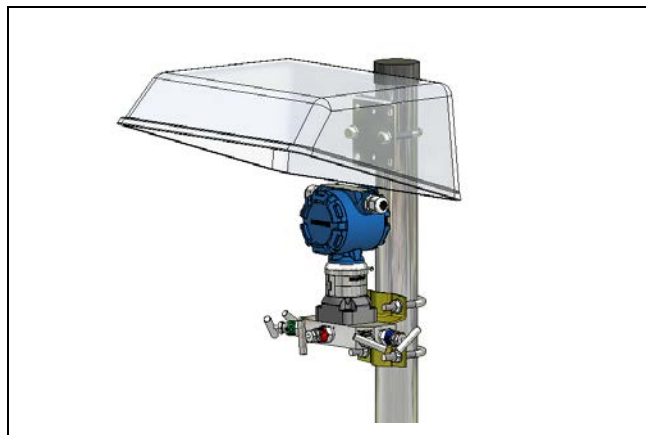
Rosemount transmitter 3051... or Endress and Hauser F12/T12 mounted underneath SHADE SD 22. SHADE SD 22 is mounted directly on the transmitter housing. A large variety of Intertec-attachment brackets are available for the various types of transmitters designed by internationally renowned manufacturers.



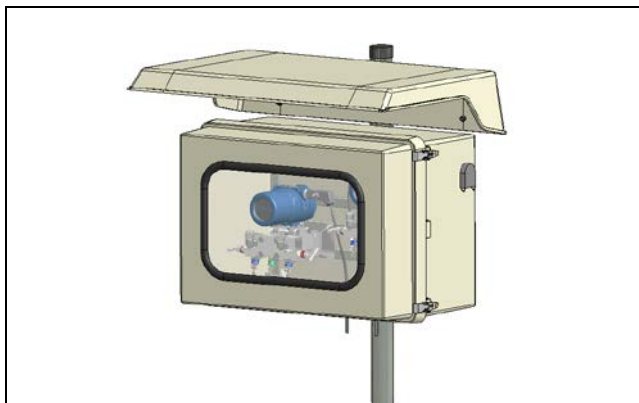
MESC Box with manifold and Rosemount-transmitter 3051 S mounted underneath SHADE SD 22 and attached to a 2" pipe stand by means of a mounting system.

Weather-sensitive instruments and fittings can be installed directly below the shade by means of a fastening set

2 Transmitter below Shade SD 40



3 Enclosure below 150



Sensitive electric equipment or electronic devices are installed in instrument enclosures and protected from the effects of the sun by the shade.

Shade Type	Suitable for enclosure
SD 50	MULTIBOX 25 and 48
SD 100	MULTIBOX 60, 70, 100, MULTIBOX 25 u. 48 horizontally mounted
SD 150	MULTIBOX 80, 150, und 170 MULTIBOX 60,70 u. 100 horizontally mounted
SD 150 Q	MULTIBOX 80, 150, 170 horizontally mounted



The shade can be mounted behind the pipe stand.

or

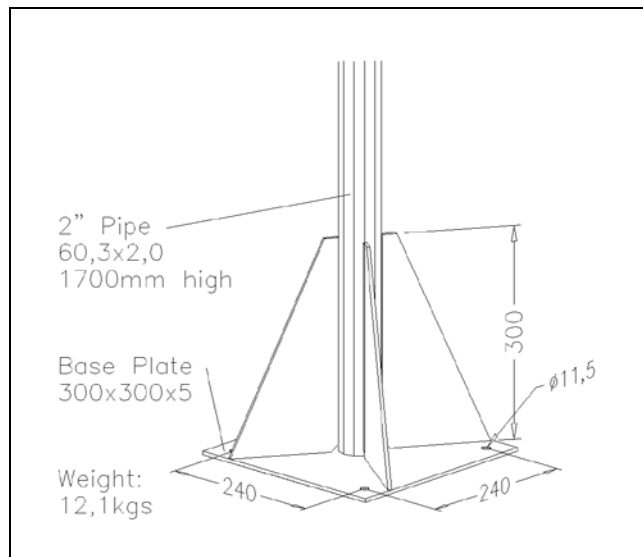
the shade can be installed between the enclosure and the pipe stand

Advantage here: adjustable in height



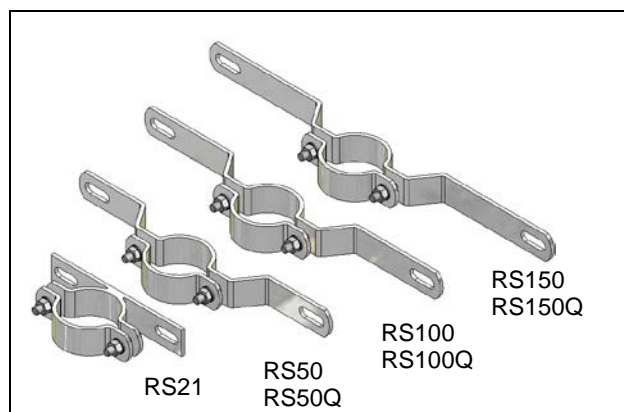
Shades SD 22, SD 40, SD 50, SD 100, SD 150 Mounting Accessories

1 Pipe stand 2"



ST17-2, 1700mm high for mounting the shades

2 Pipe mounting Bracket (RS)

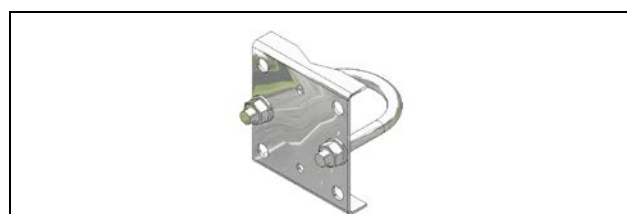


For mounting the Shades on 2" pipe stand

3 Mountingsystem



MB-SD 22/37/40 with U- bolt M8 for mounting of shade SD22, SD40 or DIASHADE 37 to 2" pipestand.

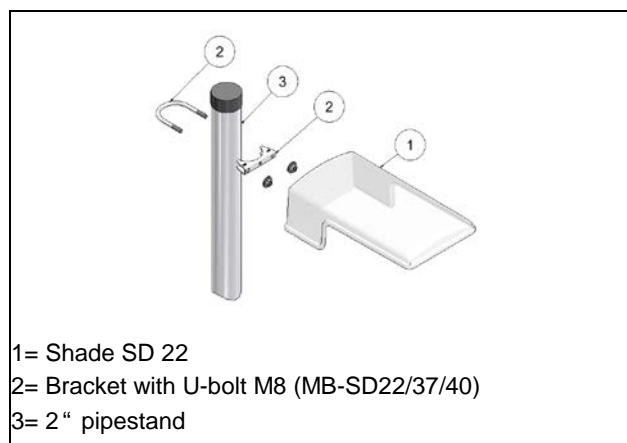


MB-SD with 2"U-bolt for mounting of shades to 2" pipestand.



Bracket (BBV) and 2 pcs. 2"U- bolt (BB2") for mounting of manifolds to pipestand

Mounting example Shade SD 22





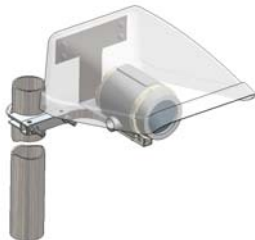
Shade- DIASHADE SD 37, SD 67, SD 127, SD 187 Applications

1 Applications under...

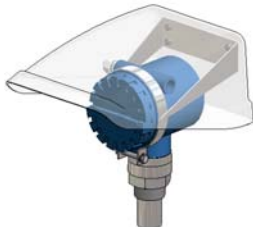
1.1 DIASHADE SD 37



Transmitter mounted underneath DIASHADE SD 37. DIASHADE SD 37 is mounted directly on a pipe stand.



Field indicator mounted underneath DIASHADE SD 37 and mounted on transmitter mounting bracket which is mounted to the pipe stand.



Rosemount transmitter 3051... or Endress and Hauser F12/T12 mounted underneath DIASHADE SD 37. DIASHADE SD 37 is mounted directly on the transmitter housing. A large variety of attachment brackets are available for the various types of transmitters designed by internationally re-nowned manufacturers.

1.2 DIASHADE SD 67

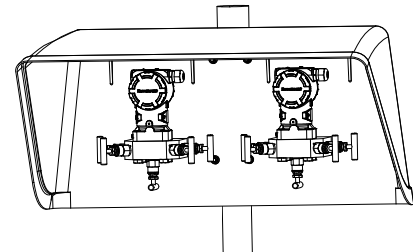


Capillary transmitter mounted underneath DIASHADE SD 67, attached to an internal pipe stand by means of mounting brackets.



Pressure transmitter mounted underneath DIASHADE SD 67 and attached to the external pipe stand by means of the MSW mounting system and rails.

1.3 DIASHADE SD 127



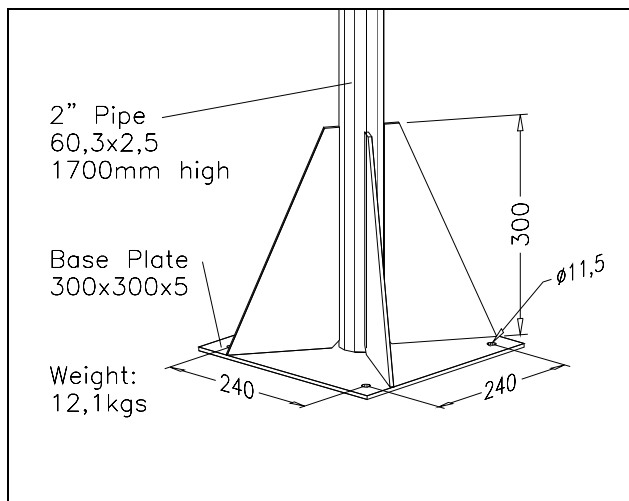
Two differential pressure transmitters with BM-manifolds, mounted on an optional mounting plate to an external pipe stand. Connection of the impulse and vent lines on the rear (horizontally).



Shade - DIASHADE SD 37, SD 67, SD 127, SD 187

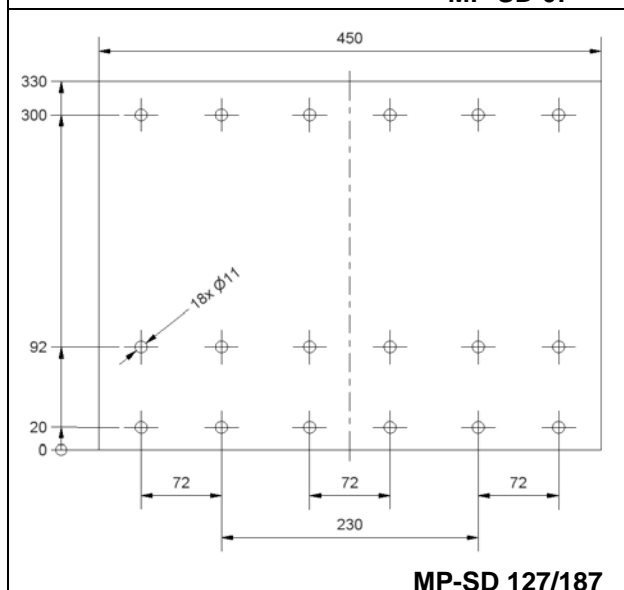
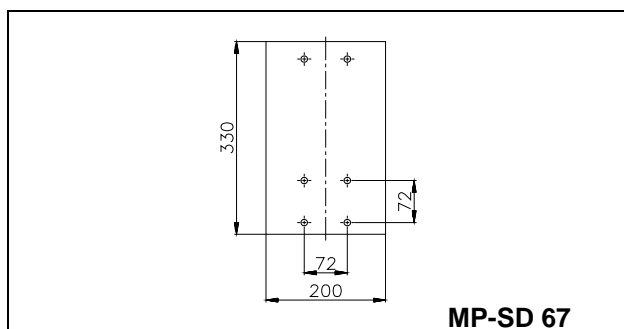
Mounting Accessories

1 Pipe stand



ST17-2, 1700mm high for mounting of shades.

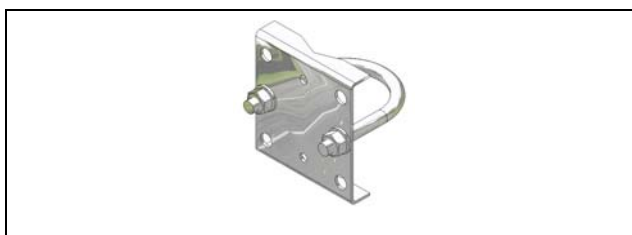
2 Mounting plates



3 Mountingsystem



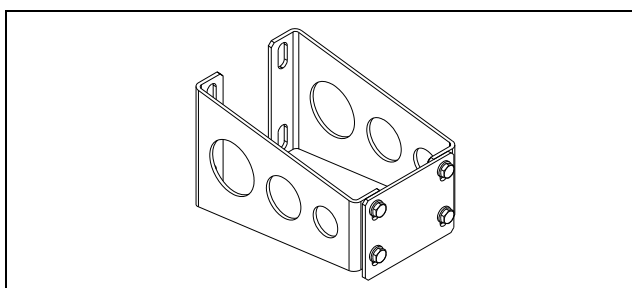
MB-SD 22/37/40 with U- bolt M8 for mounting of DIASHADE 37 to a 2" pipe stand.



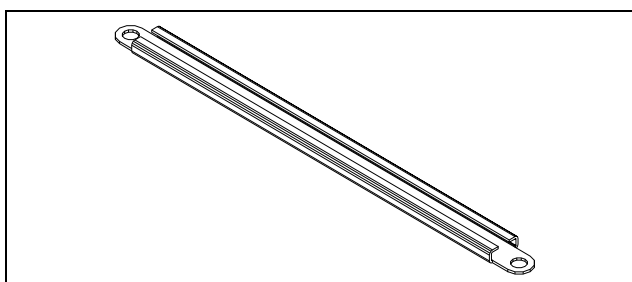
MB-SD with 2" U-bolt for mounting of DIASHADE to a 2" pipe stand.



Bracket (BBV) and 2 peaces 2"U- bolt (BB2") for mounting of manifolds to pipestand



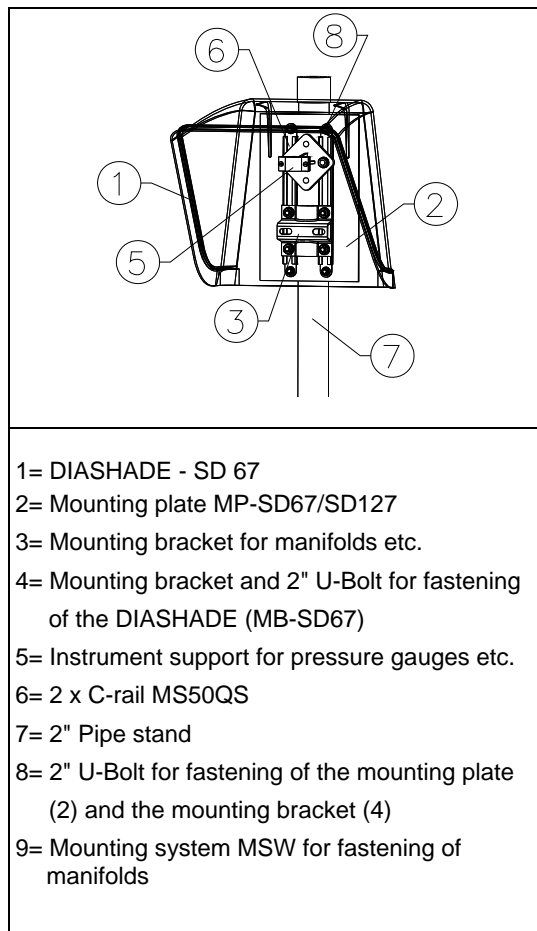
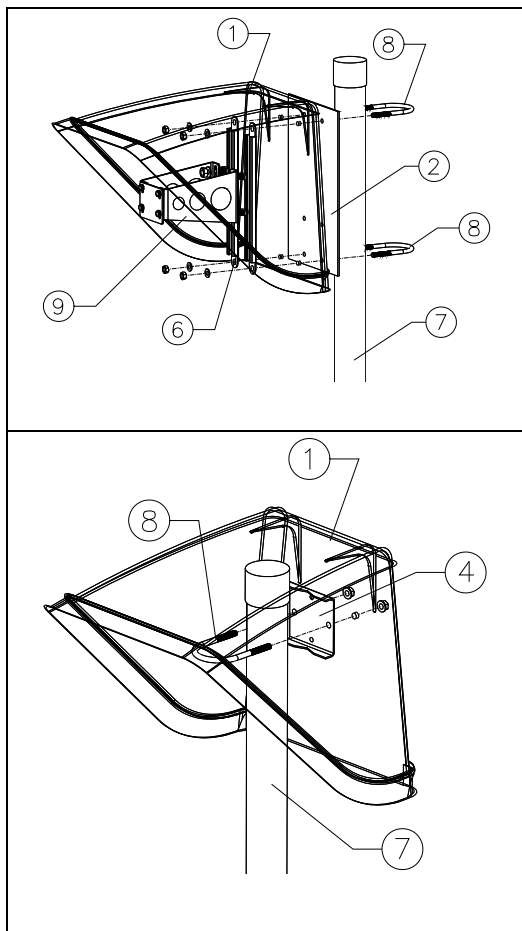
Mounting system MSW for mounting of manifolds or instruments.



C-rail MS 50 QS for mounting of manifolds.



Shade - DIASHADE SD 37, SD 67, SD 127, SD 187 Mounting Accessories





Sunshade - DIASHADE SD 37, SD 67, SD 127, SD187

Material: hot-pressed, glassfibre reinforced polyester

Colour: light grey RAL 7032

UV-resistant

Low flammability and self-extinguishing

Design

- ☐ Space-saving transport and storage possible due to tapered side walls
- ☐ GO antistatic to avoid electrostatic charges according to DIN EN IEC 60079-0

1 Application

Simple shielding of instruments and fittings designed to ensure protection from:

- Sun light (overheating)
- Dirt accumulation
- Exposure to atmospheric conditions
- Mechanical damage



2 Features

- The drip lip all around and cone shaped design allow rain and melt water to run off easily.
- Large lateral surfaces provide excellent protection from the sun, especially in case of low sun angles.
- Various mounting possibilities, especially for the protection of Transmitters, are available, as for example direct mounting of the SD37 at the Transmitter head or mounting to the pipe stand or steel construction (see Datasheet: sample application and Mounting material [KD287](#))
- Heat-insulating material preventing the heat generated by solar radiation to be transferred.
- Stackable for space-saving transport and storage due to tapered side walls.

3 Available Types and Dimensions

	DIASHADE SD 37
	H x W x D 150 x 240 x 350
	DIASHADE SD 67
	H x W x D 370 x 365 x 455
	DIASHADE SD 127
	H x W x D 370 x 765 x 455
	DIASHADE SD 187
	H x W x D 370 x 1170 x 455



SD17 Switch Protection Canopy

Made of hot-pressed glassfibre reinforced polyester.
Low flammability and self-extinguishing.

Optional design

	Standard	Option GO
colour	similar to RAL 7032 light grey	similar to RAL 7001 silver grey
	similar to RAL 3000 fire red	similar to RAL 3000 fire red
anti-static	n/a	antistatic to avoid electrostatic charges according to EN IEC 60079-0



Example of an application
(the switch is not included in the supply)

1 Application

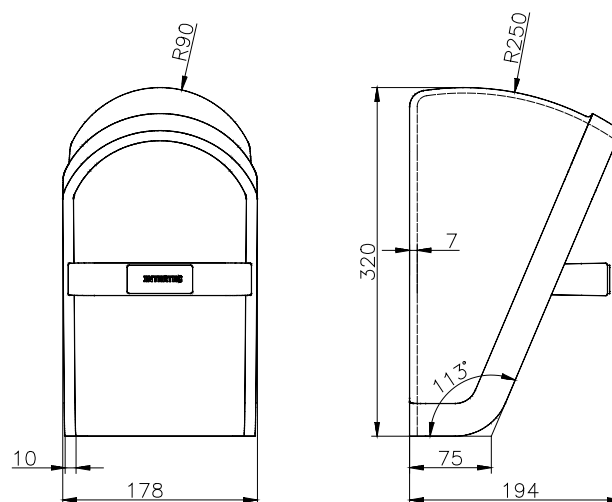
Chemical or oil and gas plants, i.e. refineries, are often open-air plants. Emergency buttons and local control switches are subject to rough mechanical and environmental conditions. Malfunction often causes operation problems.

Background to the development was a falling part of a scaffolding that hit an emergency shut off button of a German refinery and caused a damage of several million euros.

2 Special Advantages

- Fits single and multiple switches
- Very stable. Top shaped like a torus, reinforced edges, reinforced switch mounting area
- Stable SMC GRP material, long fibre reinforced polyester, high wall thickness.
- Passed 'resistance to impact' test according to IEC 60079-0 at the highest level.
- The optional front bar provides protection against accidental misuse, but does not impair manual operation (even with work gloves). It can be glued or bolted at different heights by the customer.
- Flat space for a tag at the front bar

3 Dimensions



4 Mounting Accessories

Installation accessories are available, i.e. pipe clamp RS21

